



# AX6000 Next-Gen Wi-Fi Router

Faster. Broader.  
Higher Capacity.



Archer AX6000

➤ 4804 Mbps 5GHz  
1148 Mbps 2.4GHz

➤ 2.5Gbps WAN Port  
Hi-Speed Internet Access

➤ OFDMA & MU-MIMO  
4X Higher Performance

➤ 1.8GHz Quad-Core CPU  
Top-Notch Processing

# Highlights

## 802.11 AX<sup>≡</sup> Faster. Broader. Higher Capacity.

The Archer AX6000 is TP-Link's first router with Wi-Fi 6 – based on the next generation 802.11ax Wi-Fi technology. Take your Wi-Fi to the next level while being backwards compatible with 802.11a/b/g/n/ac Wi-Fi standards.

### 4X<sup>≡</sup>

#### 4x Higher Performance

The new Downlink and Uplink MU-MIMO and OFDMA achieve a performance boost 4x that of 802.11ac

### 4X<sup>≡</sup>

#### 4x Larger Capacity

OFDMA greatly increases the number of connected devices by assigning channels to more devices simultaneously

### 3X<sup>≡</sup>

#### 3x Faster Speed

1024 QAM and Long OFDM Symbol boost overall speeds up to an incredible 6000 Mbps

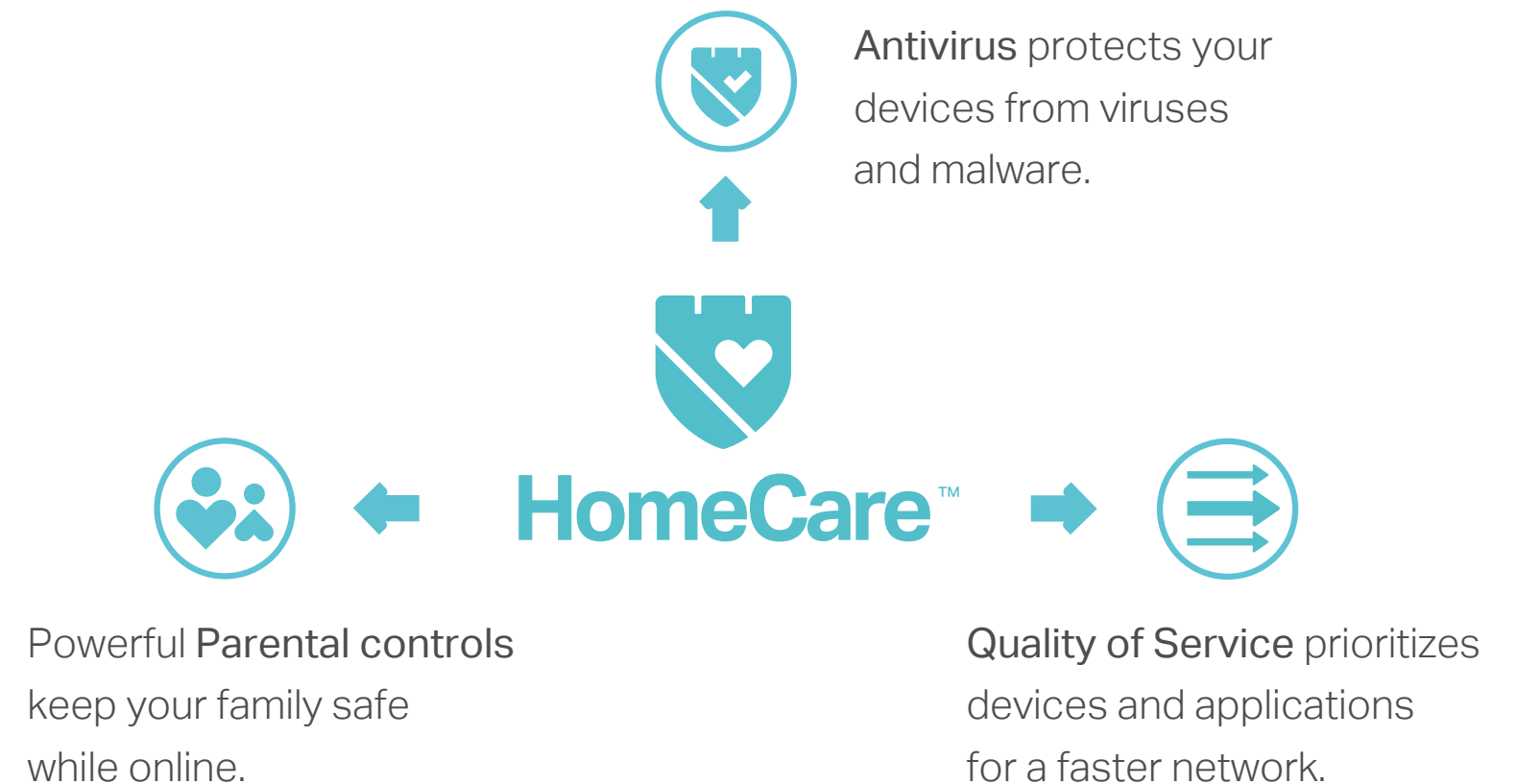


#### Boosted Coverage

Beamforming and RangeBoost technology provide stronger, more reliable connections

## Homecare™ for Comprehensive Home Threat Protection

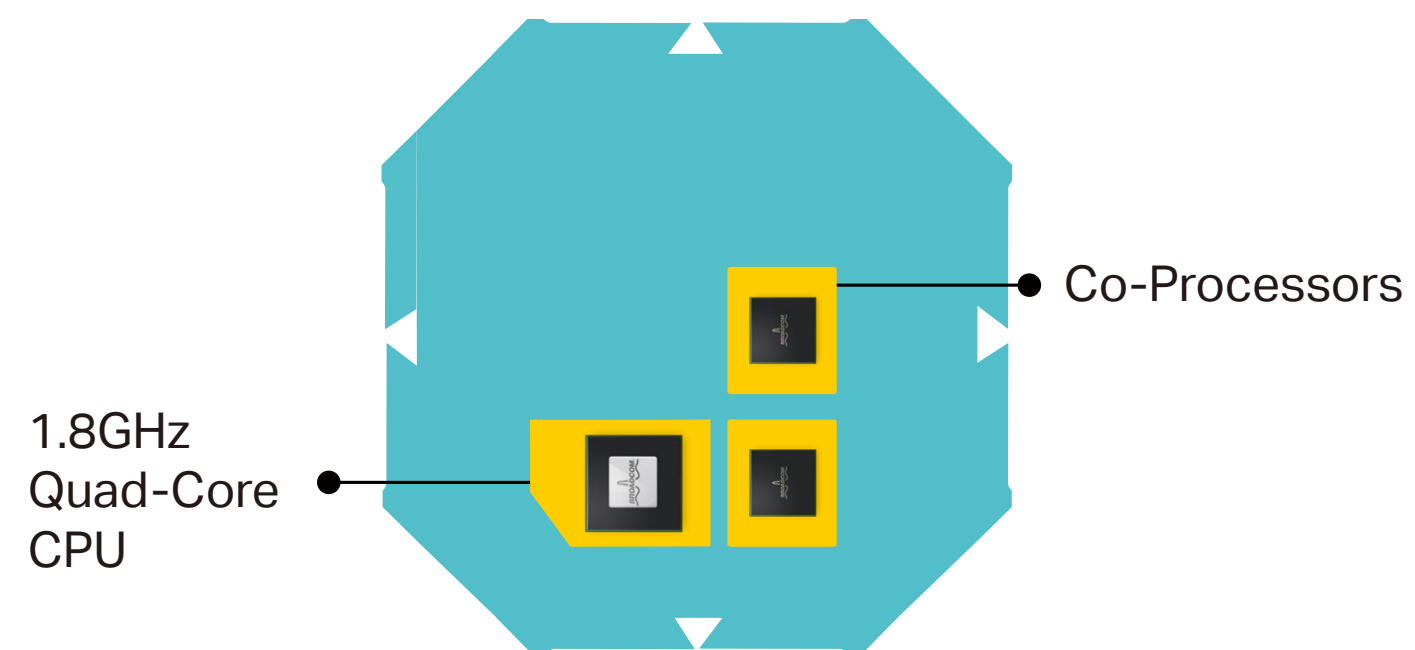
Defend your system from malicious threats that can sneak through downloads and file sharing. TP-Link HomeCare™, powered by Trend Micro™, protects every device from the latest cyber threats with powerful security, built-in antivirus, and cutting-edge intrusion prevention, comprehensively creating a highly protected smart home environment.



# Highlights

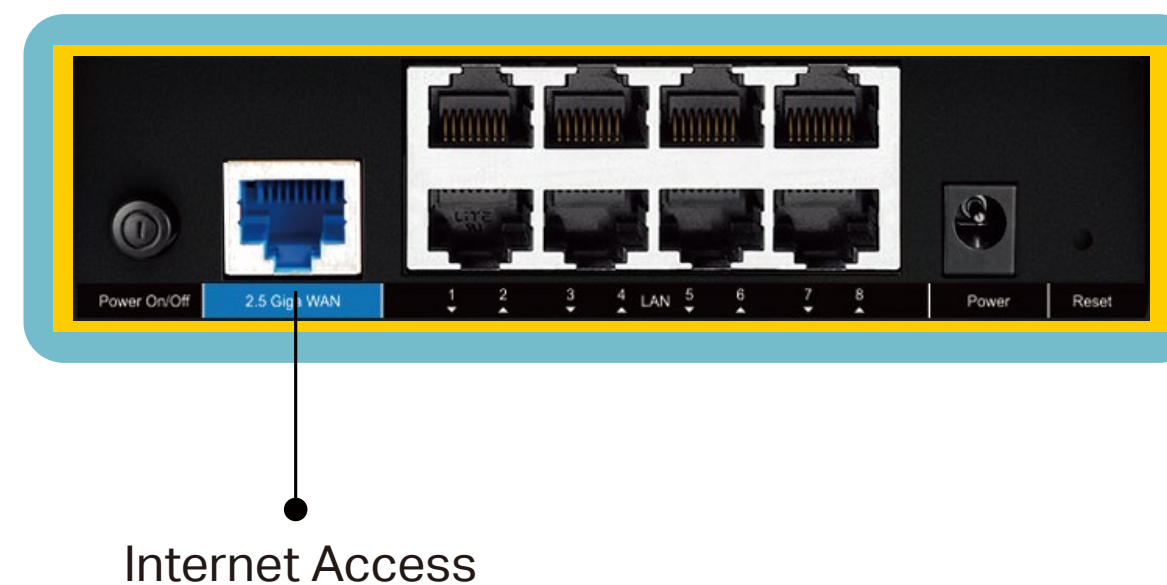
## 1.8GHz 64-bit Quad-Core CPU

An extremely powerful 1.8GHz 64-bit quad-core processor, two distinct co-processors, and 1GB of RAM work tirelessly to power your network.



## 2.5Gbps WAN Port

Archer AX6000 provides a 2.5Gbps WAN port to make fully use of the over 1Gbps internet access, boost the whole internet throughput.

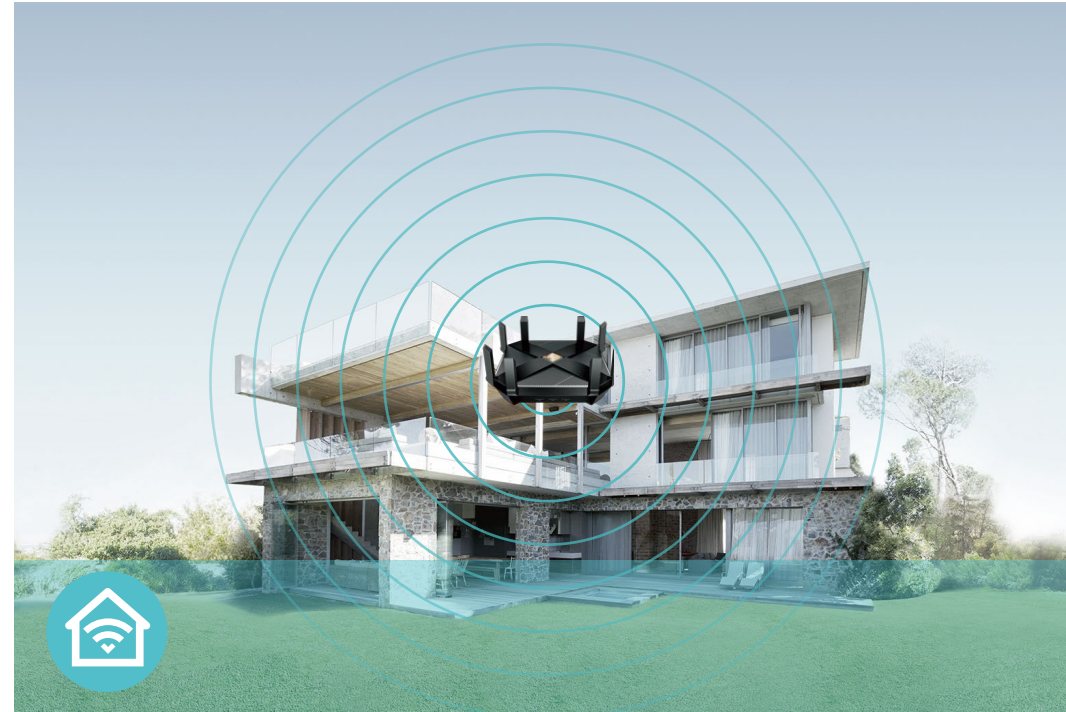


# Features



## Speed

- AX Tech – 802.11ax (also known as Wi-Fi 6) features advanced technologies including OFDMA, MU-MIMO and 1024QAM, drastically increasing the speed and efficiency of the entire network
- Ultimate Wireless Speed – 1148 Mbps on 2.4GHz (802.11ax) + 4804 Mbps on 5GHz (802.11ax)
- 1.8GHz 64-bit Quad-Core CPU – Balances the demands of your devices and improves NAT throughput to keep connections fast and continuous
- Link Aggregation – Doubles the connection speeds to an external storage devices for faster streaming and data backup
- Accelerated VPN Access – Securely connects to private networks providing 5× faster OpenVPN and PPTP VPN connections



## Wi-Fi Range

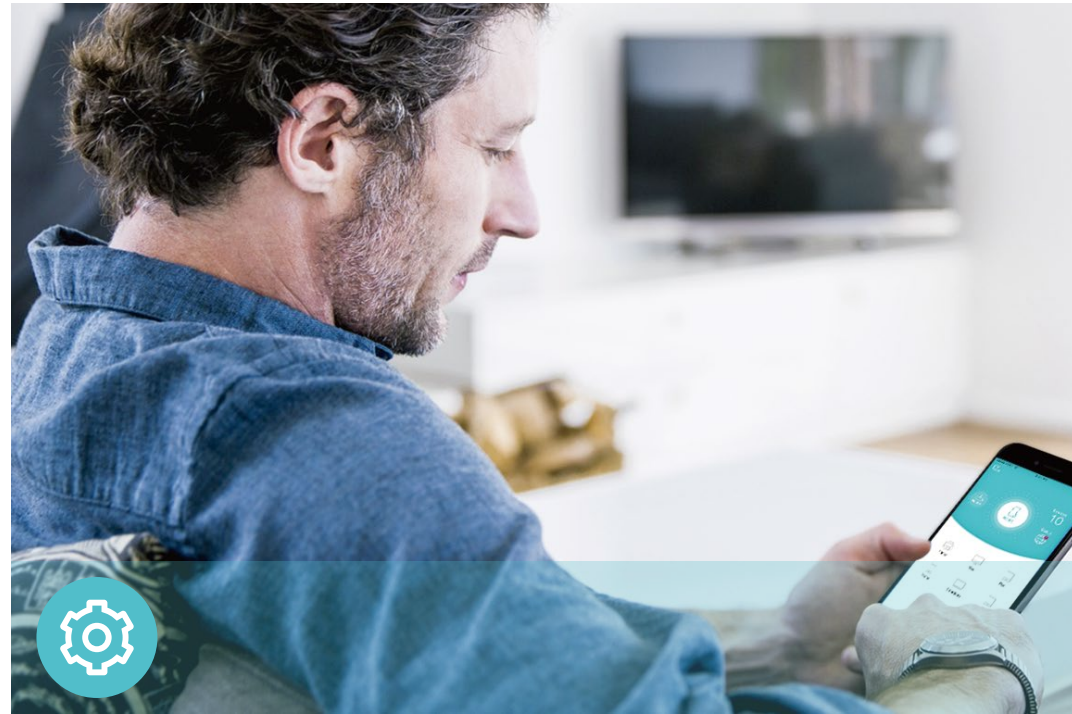
- Ultimate Range Wi-Fi – 8 high-gain external antennas deliver a Wi-Fi signal to every corner of your home, making all of your connections more efficient and stable.
- Range Boost – Greatly enhances receiving sensitivity to deliver a more stable router-client link
- Beamforming Technology – Concentrates Wi-Fi signals towards individual devices to ensure stronger connections



## Reliability

- Airtime Fairness – Balances bandwidth of connected devices to improve overall throughput and efficiency
- Smart Connect – Intelligently switches each device's connection to the optimum available Wi-Fi band
- Easy Bandwidth Management – Advanced QoS makes it easier for you to manage the bandwidth of connected devices or applications

# Features



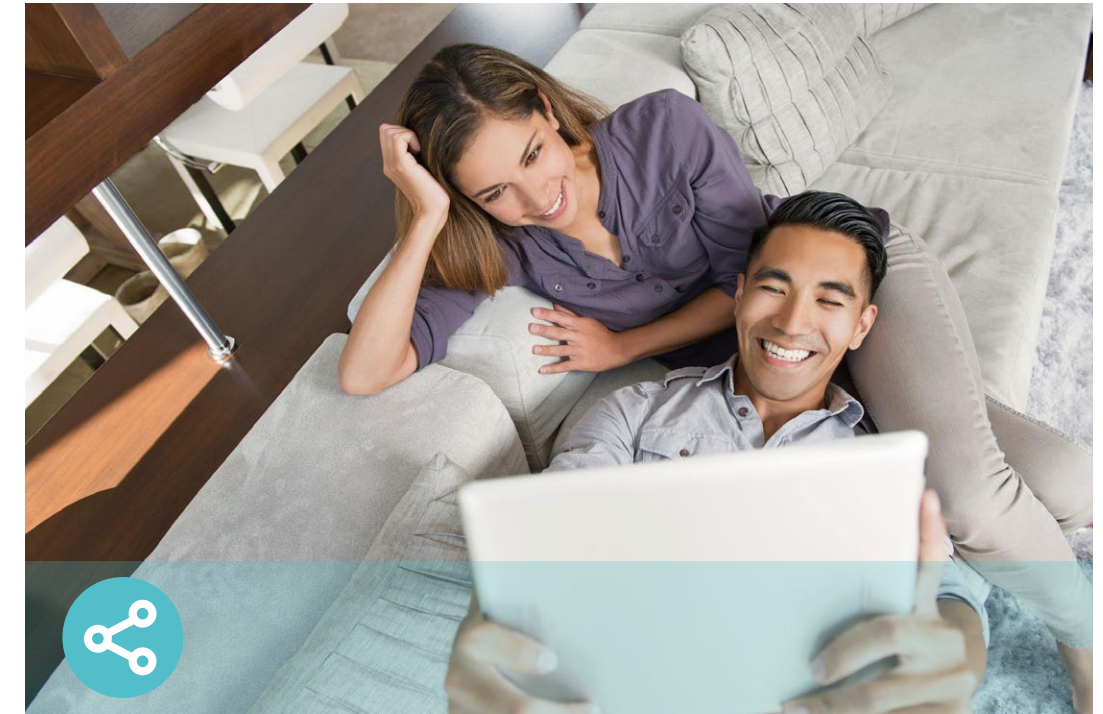
## Ease of Use

- Intuitive Web UI – Ensures quick and simple Installation without hassle
- Fast Encryption – One-touch WPA wireless security encryption with the WPS button
- Easy On/Off – Turn on/off wireless radio using the Wi-Fi button; turn on/off LEDs using the LED button
- Power On/Off – Conveniently power on or off your router as required
- Hassle-free Management with Tether App – Network management is made easy with the TP-Link Tether App, available on any Android and iOS device
- Bluetooth Onboarding – Open phone's bluetooth and quickly sets up the network via the Tether app



## Security

- Antivirus – Protects all connected devices in your home from viruses and malware
- Guest Network – Keeps your main network secure by creating a separate network for friends and visitors
- Access Control – Establishes a whitelist or blacklist to allow or restrict certain devices to access the internet
- Parental Controls – Restricts internet access time and contents for children devices
- Encryptions for Secure Network – WPA-PSK and WPA2-PSK encryptions provide active protection against security threats



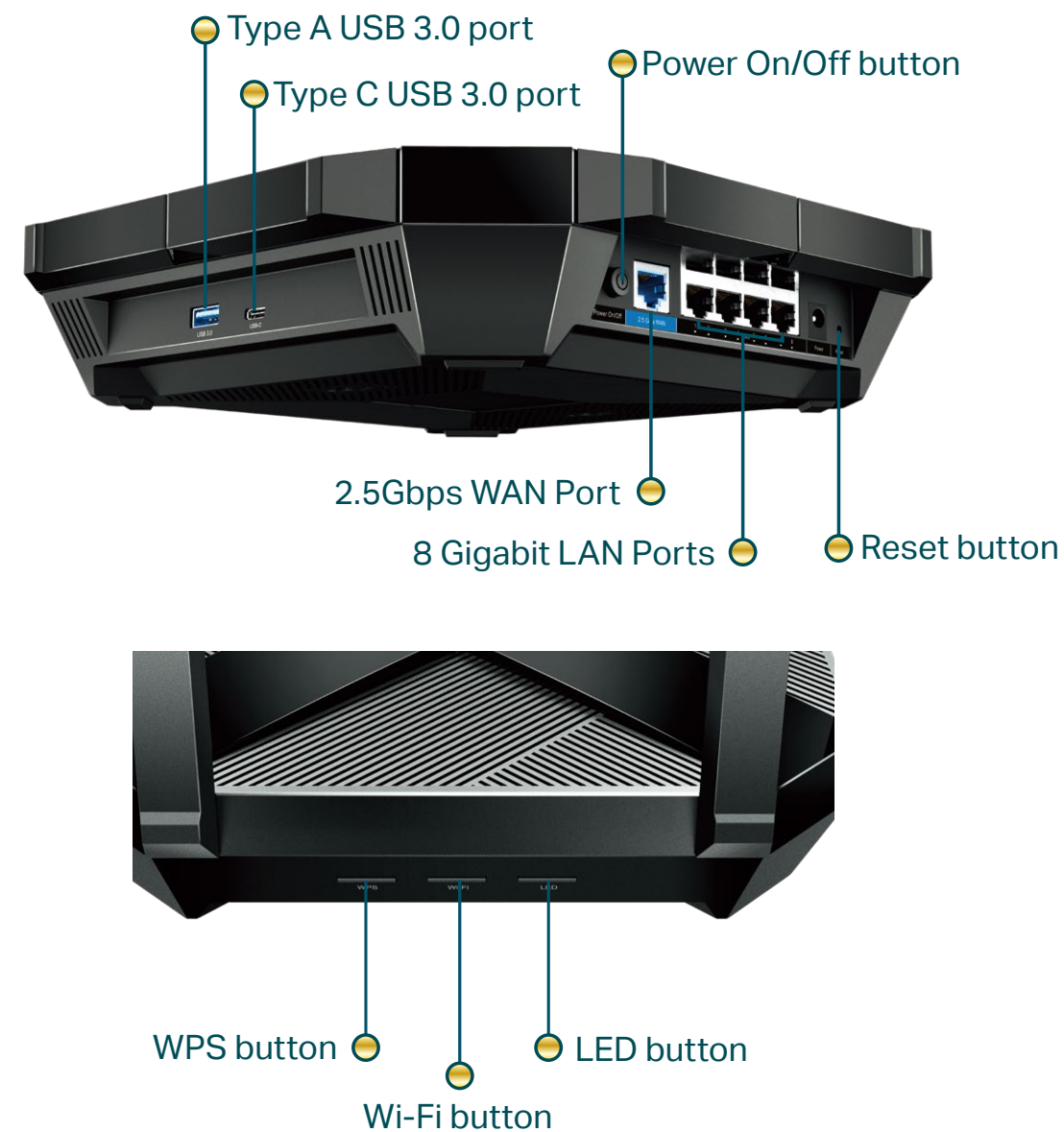
## Easy Sharing

- Type C & Type A USB 3.0 Ports – Provide data transfers up to 10× faster than a traditional USB 2.0 port.
- Built-in Media Server – Allows you to play music, watch videos and view photos from any device on your network

# Specifications

## Hardware

- Ethernet Ports: One 2.5Gbps WAN Port, Eight Gigabit LAN Ports
- USB Ports: One Type A & One Type C USB 3.0 Ports
- Buttons: WPS Button, Wi-Fi On/Off Button, LED On/Off Button, Power On/Off Button, Reset Button
- Antennas: 8 High-Performance External Antennas
- External Power Supply: 12V/4A
- Dimensions (W x D x H): 10.3×10.3×2.4in (261.2×261.2×60.2mm)



## Wireless

- Wireless: 1148 Mbps on 2.4GHz (802.11ax) + 4804 Mbps on 5GHz (802.11ax), compatible with 802.11a/b/g/n/ac Wi-Fi standards
- Frequency: 2.4GHz and 5GHz
- Transmit Power:
  - CE: <20dBm(2.4GHz), <23dBm(5.15GHz~5.35GHz); <30dBm(5.47GHz~5.725GHz)
  - FCC: <30dBm(2.4GHz & 5.15GHz~5.25GHz & 5.725GHz~5.825GHz)
- Reception Sensitivity:
  - 5GHz:
    - 11a 6Mbps: -97dBm, 11a 54Mbps:-79dBm
    - 11ac VHT20\_MCS0:-96dBm, 11ac VHT20\_MCS11:-66dBm
    - 11ac VHT40\_MCS0:-94dBm, 11ac VHT40\_MCS11:-63dBm
    - 11ac VHT80\_MCS0:-91dBm, 11ac VHT80\_MCS11:-60dBm
    - 11ac VHT160\_MCS0:-88dBm, 11ac VHT160\_MCS11:-55dBm
    - 11ax HE20\_MCS0:-95dBm, 11ax HE20\_MCS11:-63dBm
    - 11ax HE40\_MCS0:-92dBm, 11ax HE40\_MCS11:-60dBm
    - 11ax HE80\_MCS0:-89dBm, 11ax HE80\_MCS11:-58dBm
    - 11ax HE160\_MCS0:-85dBm, 11ax HE160\_MCS11:-55dBm
  - 2.4GHz:
    - 11g 6Mbps: -97dBm, 11a 54Mbps:-79dBm
    - 11n HT20\_MCS0:-97dBm, 11n HT20\_MCS7:-78dBm
    - 11n HT40\_MCS0:-95dBm, 11n HT40\_MCS7:-75dBm
    - 11ac VHT20\_MCS0:-96dBm, 11ac VHT20\_MCS11:-67dBm
    - 11ac VHT40\_MCS0:-94dBm, 11ac VHT40\_MCS11:-64dBm
    - 11ax HE20\_MCS0:-96dBm, 11ax HE20\_MCS11:-64dBm
    - 11ax HE40\_MCS0:-93dBm, 11ax HE40\_MCS11:-61dBm
- Wireless Function: Enable/Disable Wireless Radio, WDS Bridge, WMM, Wireless Statistics
- Wireless Security: 64/128-bit WEP, WPA/WPA2, WPA-PSK/WPA2-PSK encryptions

# Specifications

## Software

- Quality of Service: Device and Application Prioritisation
- WAN Type: Dynamic IP/Static IP/PPPoE/PPTP(Dual Access)/L2TP(Dual Access)/BigPond
- Management: Access Control, Local Management, Remote Management
- DHCP: Server, DHCP Client List, Address Reservation
- Port Forwarding: Virtual Server, Port Triggering, UPnP, DMZ
- Dynamic DNS: DynDns, NO-IP, TP-Link
- Access Control: Parental Controls, Local Management Control, Host List, White List, Black List
- Firewall Security: DoS, SPI Firewall, IP and MAC Address Binding
- Protocols: IPv4, IPv6
- USB Sharing: Supports Samba(Storage)/FTP Server/Media Server
- Guest Network: 2.4GHz Guest Network, 5GHz Guest Network

## Others

- Certification:  
CE, FCC, RoHS
- System Requirements:  
Microsoft Windows 98SE/NT/2000/XP/Vista™/7/8/8.1/10, MAC OS, NetWare, UNIX or Linux  
  
Internet Explorer 11, Firefox 12.0, Chrome 20.0, Safari 4.0, or other Java-enabled browser  
  
Cable or DSL Modem  
  
Subscription with an internet service provider (for internet access)
- Environment:  
Operating Temperature: 0°C~40°C (32°F ~104°F)  
Storage Temperature: -40°C~70°C (-40°F ~158°F)  
Operating Humidity: 10%~90% non-condensing  
Storage Humidity: 5%~90% non-condensing
- Package Contents  
Wireless Router Archer AX6000  
  
Power Adapter  
  
RJ45 Ethernet Cable  
  
Quick Installation Guide



For more information, please visit

<http://www.tp-link.com/products/details/Archer-AX6000.html>

or scan the QR code left

Attention: This device may only be used indoors in all EU member states and EFTA countries.

Specifications are subject to change without notice. TP-Link is a registered trademark of TP-Link Technologies Co., Ltd. Other brands and product names are trademarks or registered trademarks of their respective holders. Copyright ©2020 TP-Link Technologies Co., Ltd. All rights reserved.

\*Maximum wireless signal rates are the physical rates derived from IEEE Standard 802.11 specifications. Actual wireless data throughput and wireless coverage are not guaranteed and will vary as a result of network conditions, client limitations, and environmental factors, including building materials, obstacles, volume and density of traffic, and client location.

\*Use of MU-MIMO and 1024-QAM requires clients to also support those functions.

\*A basic TP-Link HomeCare™, powered by Trend Micro™, package is included for 3 years from date of activation at no additional cost. It includes Parental controls, Quality of Service, and Antivirus. Deactivation of HomeCare™ will disable certain controls and protections. For a complete list of HomeCare™ functions, go to [www.tp-link.com](http://www.tp-link.com).